

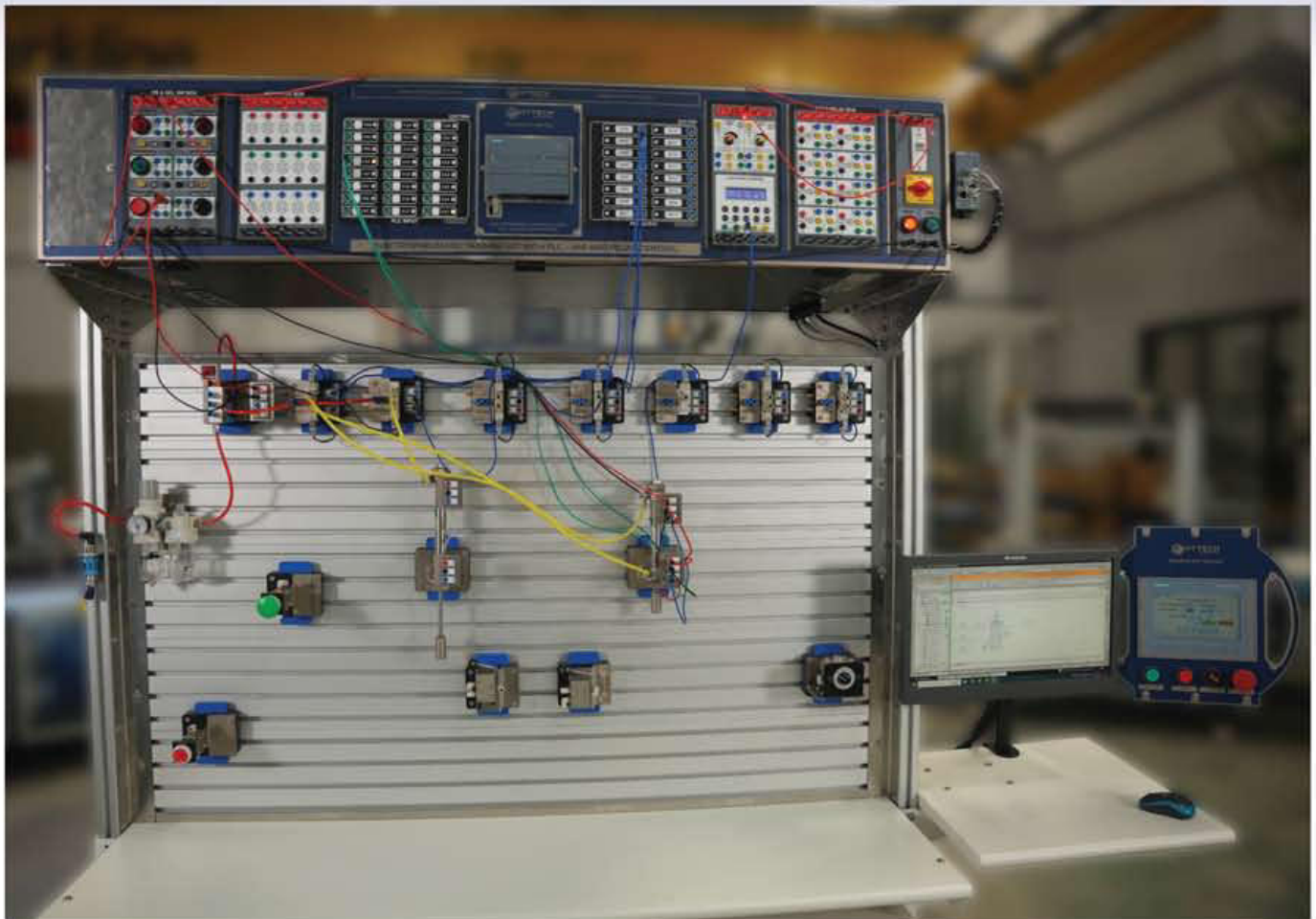
# ELECTROPNEUMATIC TRAINING KIT WITH PLC – HMI AND RELAY CONTROL



Hytech Didactic Electropneumatic Training kit is mounted on a rigid Mild steel structure. The training kit is equipped with PLC, HMI as well as relay based operation modules. Control modules are made of industrial PCBs making the kit easy to operate as well as maintain.

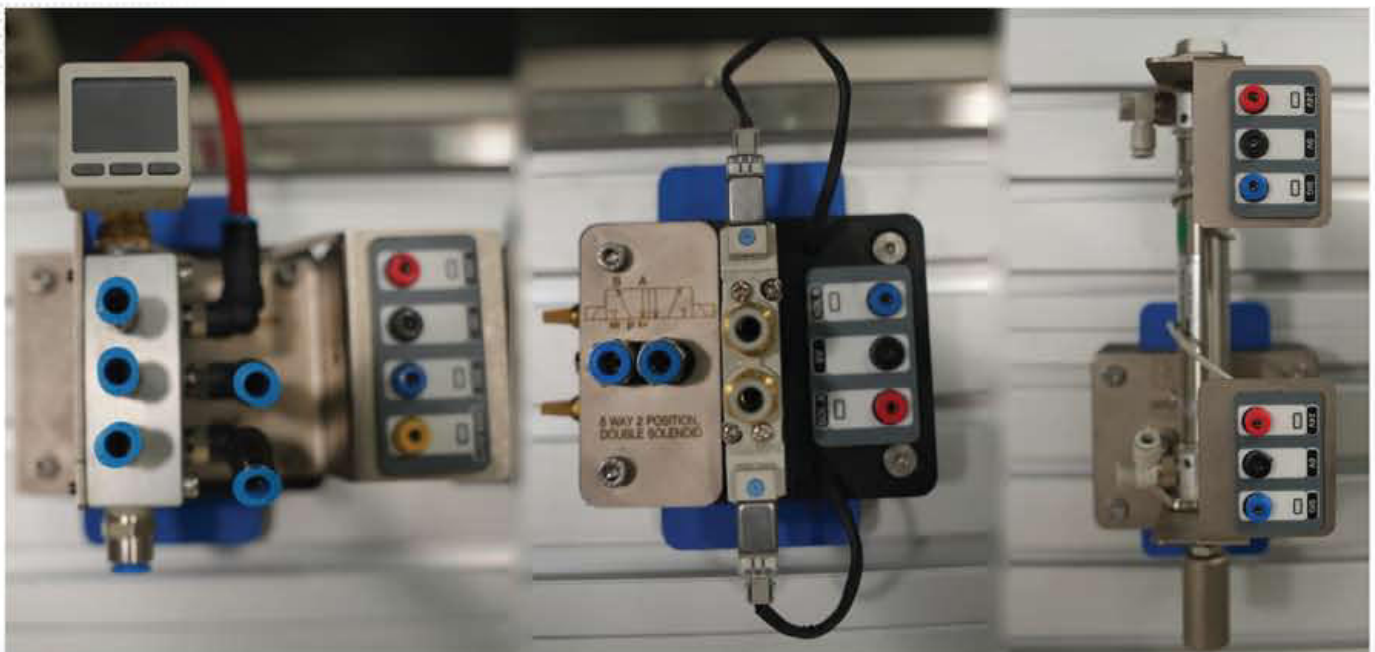
Electropneumatic training kit comes with a dual faced worksurface made up of aluminium extrusions. Quick fix mechanisms for all valves and actuators makes it easier for users to engage and disengage the valves from Training kit. Quick fix mechanism makes it easy for users to store valves in drawers provided along with training kit. Solenoid valves as well as Cylinders are provided with PCBs for electrical connections.

Control module is mounted at the top of a training kit. User can have a control module of PLC and Relays on both sides of the training kit which makes it truly a double sided training kit. Electropneumatic Training kit can be seamlessly integrated with industrial automation modules such as Colour Based Sorting Conveyor.



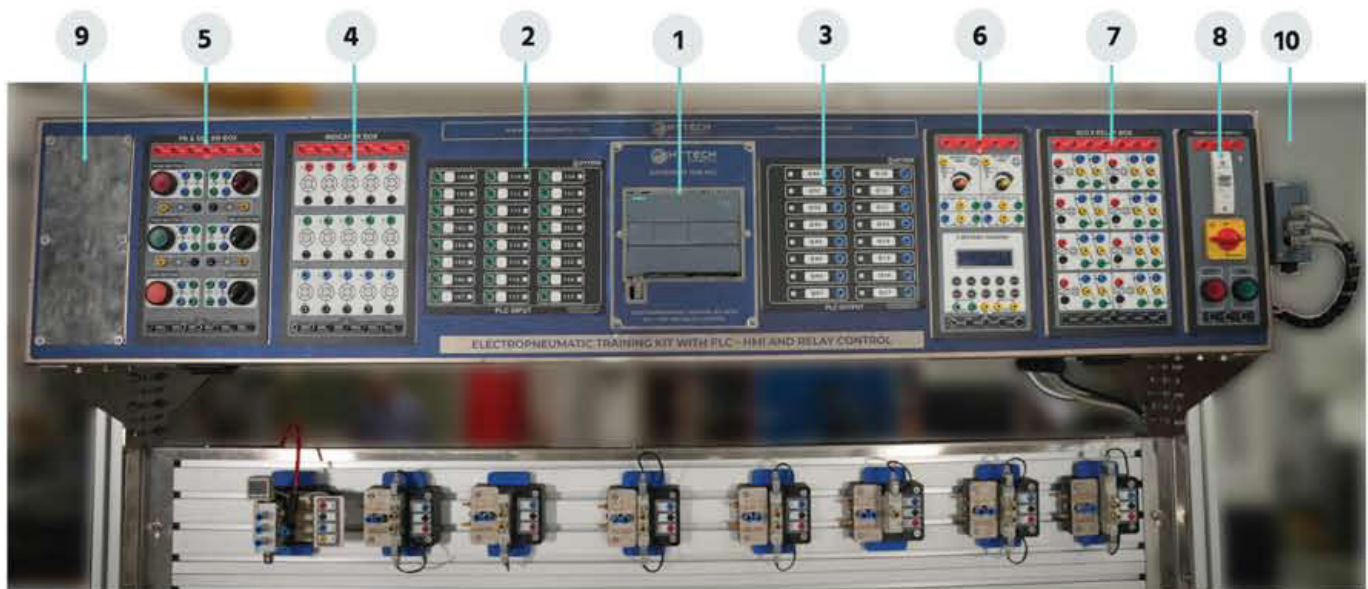
### Quick Fixing Plates:

Hytech Didactic Electropneumatic training kit is equipped with indigenously developed quick fixing plates which can be mounted on the work surface without any external tools. PCB for electrical connection is also mounted on the plate. Each plate for solenoid valves is provided with 3 pressure (P/I) ports which can be utilized for pneumatic circuits. ISO symbol of the valve is also engraved on the plate for ease of understanding.





## Control Box:



1. PLC (Siemens / Schneider)	6. Electronic Timer and Counter Module
2. PLC Input Module with 24 inputs and override buttons (With Indicators)	7. 2 Change Over 8 Relay Module
3. PLC Output Module with 16 inputs (With Indicators)	8. Main Supply and Powerbank Module
4. Indicator Box	9. Spare
5. Push Button and Selector Switch Module	10. Unmanaged Switch for Workstation, PLC and HMI Communication

Hytech Didactic Electropneumatic Training kit is equipped with PLC – HMI control modules as well as relay based control modules providing hands on experience on both control logics for electropneumatics operations.

Each module of the control box except PLC input and output modules are provided with 24V power bank. User needs to connect the link of 2mm patch cord from Power ON module to activate this power bank.

### PLC (Siemens S7 1200) and HMI (Siemens KTP 700) Module:

PLC module consists of Siemens S7 1200 PLC, Siemens KTP 700 HMI, TIA Software along with PLC Input and Output modules. PLC inputs are connected to PLC input module by hard wired connections. User can connect PLC inputs from this module with field inputs with the help of 2mm Banana connections. Each input on the PLC input module is equipped with a press button to override the input. PLC outputs are connected to PLC output module by hard wired connections. User can connect PLC outputs from this module with field outputs with the help of 2mm Banana connections. User can program the experiments from PLC and HMI by designing the logic in Siemens TIA portal or directly from simulation software through OPC – UA.

### Power Bank and Power ON Module:

User can switch On the compressor as well as entire kit from this module. This kit is also provided with 24V powerbank which is powered on along with the training kit. User needs to connect other modules with this power bank to switch them ON.

**2 Change Over 8 Relay Module:**

This module is equipped with 8 Qty 2 changeover relays which can be utilized to carry out relay control based electropneumatics experiments.

**Electronic Timer and Counter Module:**

For Relay control based electropneumatic operations, user can utilize this module for timer and counter based applications.

**Indicator Module:**

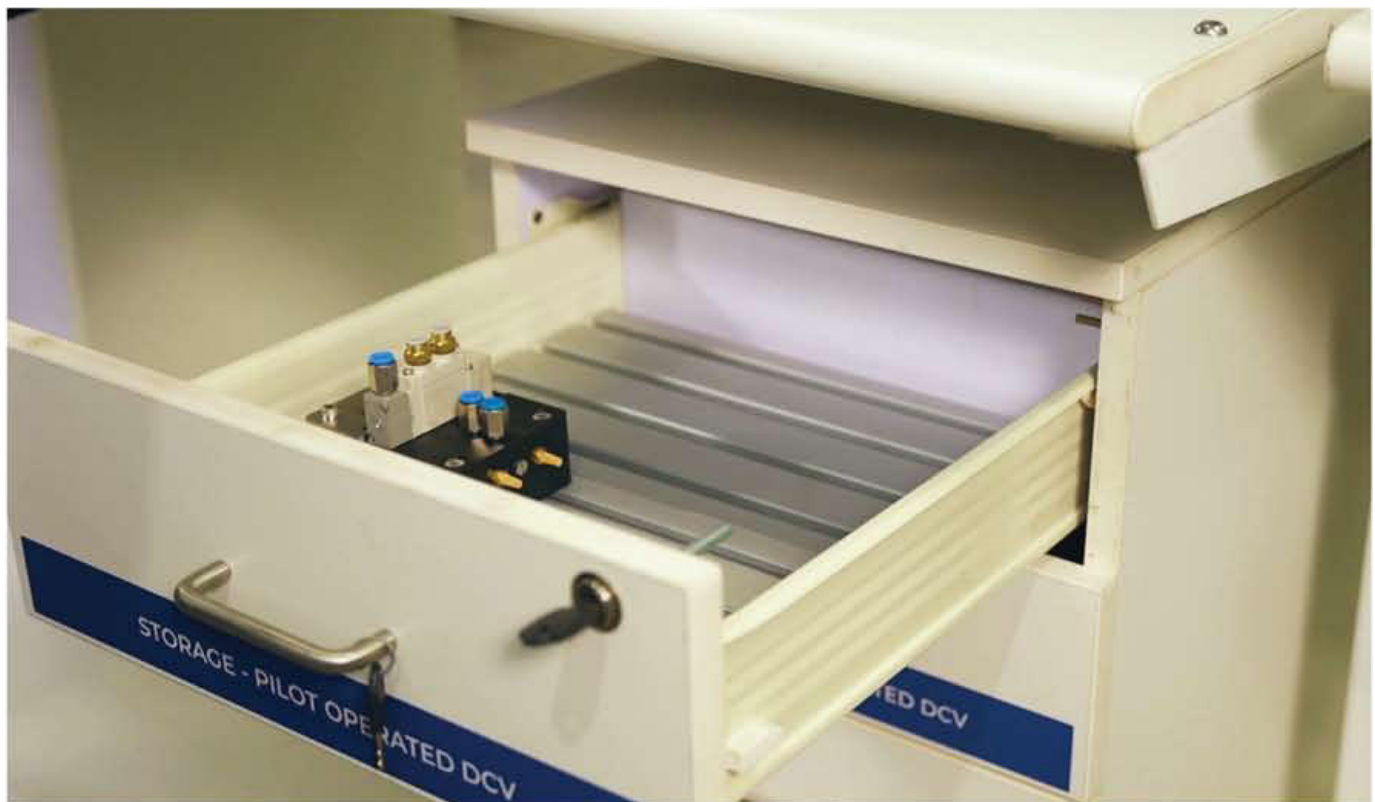
This module is equipped with 15 Qty indicators which can be utilized for relay control based electropneumatic applications.

**Push Button and Selector Switch Module:**

This module is equipped with various push buttons and selector switches which act as input sources for relay control based electropneumatic applications.

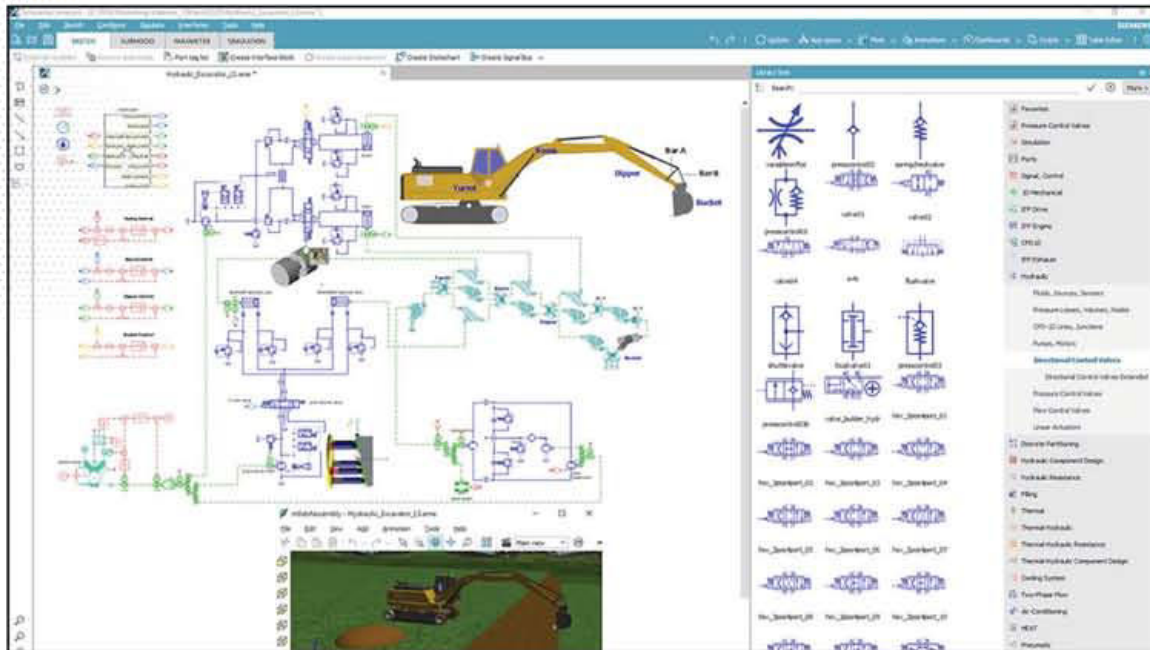
**Storage Arrangement:**

Electropneumatic training kit is provided with a pedestal with minimum 3 drawers on both sides of the training kit. Drawers are equipped with aluminium profiles on which the valves can be mounted and stored with the help of quick fix mechanism.

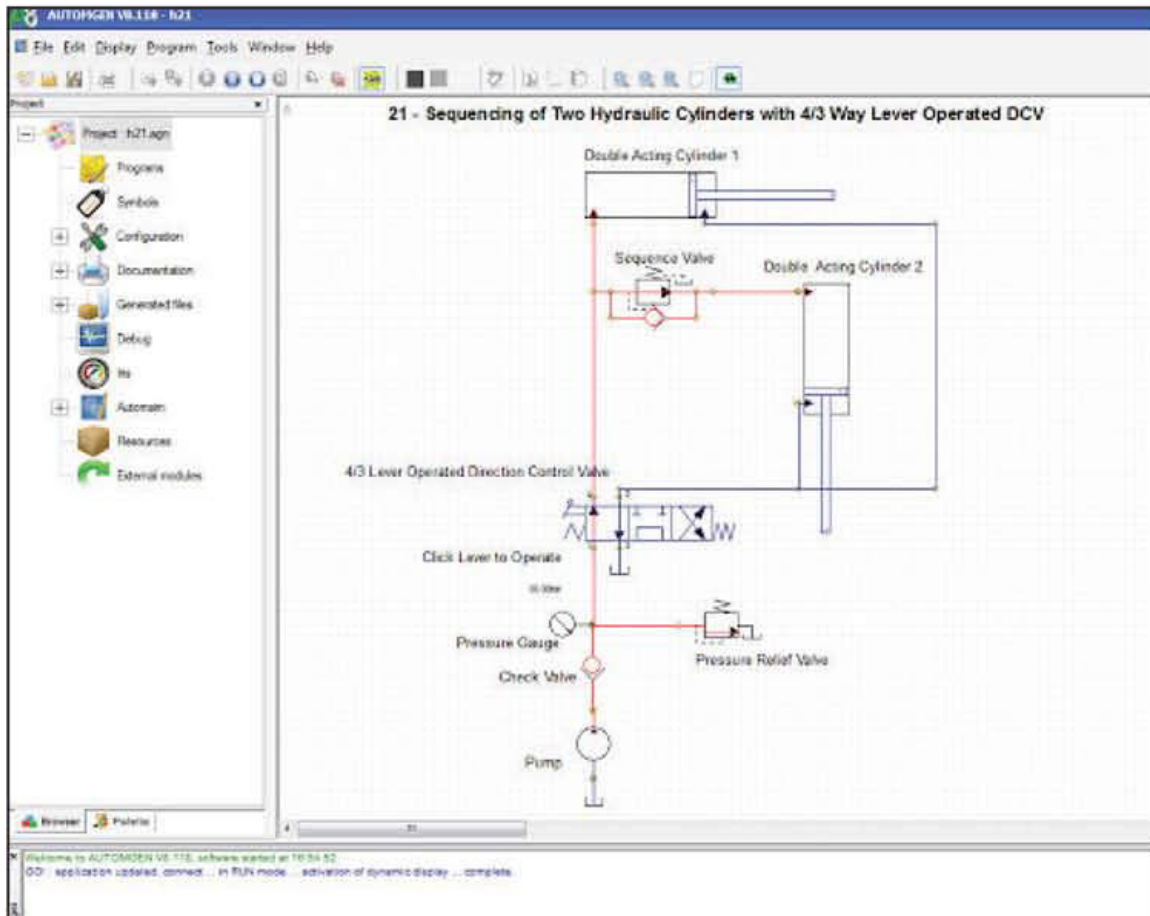




## Integration with Simulation Software:



Hytech Didactic Electropneumatic Training kit can be seamlessly integrated with IRAI Automgen, Siemens Amesim as well as Automation Studio software. User can simulate various circuits on these software before they are actually executed on the training kit. Various simulation circuits depending on user requirement can be provided on any of the above mentioned simulation software.



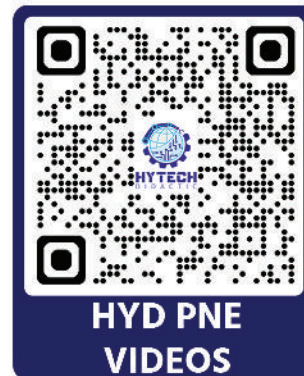
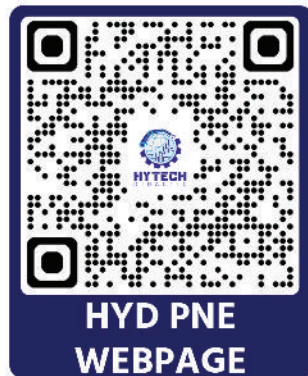
**Augmented Reality:**

Complete training support in augmented reality is provided along with Hytech Didactic Electropneumatic Training Kit. User can utilize this provision to explain various experiments to students as well as to understand the details of the training kit. Additional experiments depending on user requirement along with PLC ladder logic and pneumatic connections in Augmented Reality can be provided.





## **DISCLAIMER AND COPYRIGHT NOTICE**



### **Copyright © 2024 Hytech Didactic. All rights reserved**

This website/brochure and all its content, information, or material (including, but not limited to, text, graphics, video, and audio) is the copyright of HYTECH GROUP. This website/brochure is protected by Indian copyright and other laws. Any form of use, reproduction, or redistribution of the content, information, or material on this website/brochure in any form is strictly prohibited.

You may not, except otherwise with prior permission and express written consent by HYTECH GROUP, copy, download, print, extract, exploit, adapt, edit, modify, republish, reproduce, rebroadcast, duplicate, distribute, transmit, record, host, or store, or publicly display any of the content, information, or material on this website/brochure for non-personal or commercial purposes, except for any other use as permitted by the applicable copyright law while acknowledging HYTECH GROUP as the source of any such content, information, or material. Information on this website/brochure is provided "As Is" without warranty of any kind, either express or implied, including, but not limited to, the implied warranties of merchantability, fitness for a particular purpose, or non-infringement.

HYTECH GROUP will not be responsible for the quality, accuracy, completeness, or appropriateness of the content, information, or material on this website/brochure. HYTECH GROUP may also make improvements and/or changes in the products and/or the content mentioned at any time without notice.

### **HYTECH GROUP Logos Legal Protection and Uses**

- As a registered trademark of HYTECH GROUP, the HYTECH GROUP logo is protected by law and may not be used by other organizations or entities without HYTECH GROUP's express permission.
- HYTECH GROUP retains the exclusive right to grant or refuse permission to use its logo
- The HYTECH GROUP logo may not be used without permission as a button to link to HYTECH

### **Other Logos and Brand Names**

Logos and brand names displayed on HYTECH GROUP websites / brochures are the exclusive intellectual property of their respective owners.

[sales@hytechdidactic.com](mailto:sales@hytechdidactic.com)  
[www.hytechdidactic.com](http://www.hytechdidactic.com)